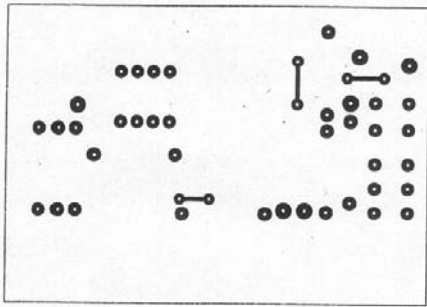
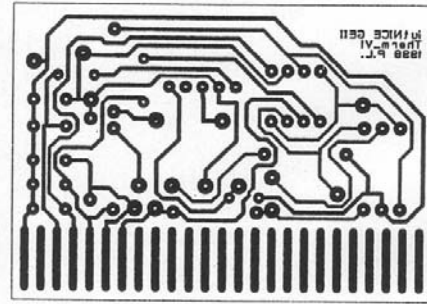


CONTRACT NO.	COMPANY NAME	IUT de NICE	
APPROVALS	DATE	DWG	module therm_V1
DRAWN	10/02/09/99	SIZE	DWG NO.
CHECKED	B	FSCV NO.	REV.
ISSUED		SCALE	1
			SHEET/1

SCHEMA ELECTRIQUE



Typon côté composants



Typon côté cuivre

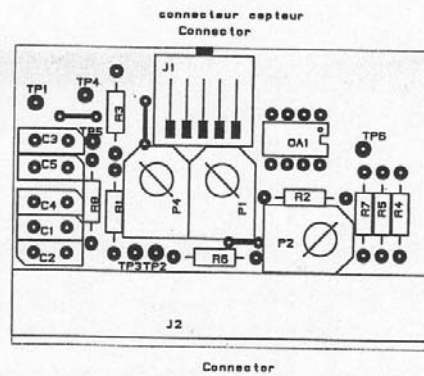


Schéma d'implantation des composants

Parts List

Cadstar Design Editor Version 2.2

Design: c:\P-Laurent\malaisie\thermometre\therm_v1.pcb

Design Title:
Cadstar PCB Design - 2 Layer Defaults

Date: vendredi 11 janvier 2002
Time: 14:47

Part Name/Number	Description	Qty.	Comps.
100K-5%-TR4	100K TR4 METAL OXIDE FILM 5%	3	R3-4 R7
100N plastic		5	C1-5
10K-5%-TR4	10K TR4 METAL OXIDE FILM 5%	1	R5
4K7-5%-TR4	4K7 TR4 METAL OXIDE FILM 5%	3	R1-2 R8
56K-5%-TR4	56K TR4 METAL OXIDE FILM 5%	1	R6
adj_10KH		2	P1-2
adj_4K7H		1	P4
EDGE_CONN 25P		1	J2
STOCKO 5P_COUDE	connecteur STOCKO 5 points cou	1	J1
TL082CP	DUAL OP-AMP, BIFET	1	OA1
Testpoint		6	TP1-6

End of report

NOMENCLATURE